



ELS-24 Heavy Duty P-6033 Telemetry Sling Shackle

Euroload Limited provide a range of Heavy Duty load monitoring shackles. Manufactured from Van Beest P-6033 heavy duty sling shackle as standard. Stainless steel or steel load pins available.

Euroload can manufacture using any manufacturer or style of load shackle for specific applications. Subsea or Hazardous area are also available.

At Euroload we calibrate every load shackle in its bow in tension. We never calibrate load shackle pins on V Blocks in compression. The accuracy is unacceptable calibrated on V blocks.

Euroload load shackles have incredible accuracy and repeatability through years of R and D.

These heavy duty load shackles have been designed to cope with any environment with ease.

The options available for the ELT telemetry output are unsurpassed, from battery operated handsets to receiver modules for analogue output, digital output, gateways, datalogging, large digit displays, printers, etc. See our ELT24 Made to Measure brochure for a full list.

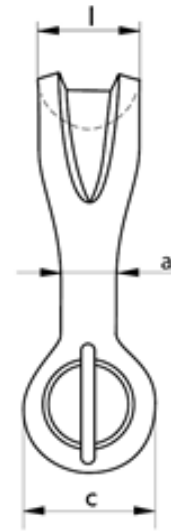
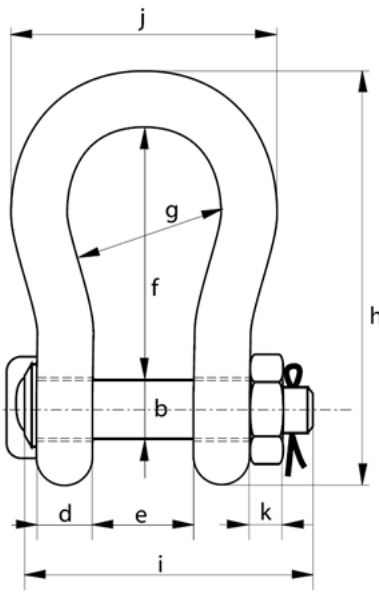
The 2.4 GHz signal is worldwide exempt.

The standard range cover 120 tonne to 2000 tonne. Special's are available on request. These load shackles are utilised in varies industries including, Oil and Gas, Manufacturing, Aerospace, renewables, Fishing, Transportation, Marine.

Anywhere a reliable tensile load reading is required.

Features:

- . ELT24 telemetry output. 2.4 GHz worldwide except
- . Unsurpassed range of receivers and modules
- . Free datalogging software
- . High Grade steel or stainless steel load pins
- . Compact size and low headroom.
- . Exceptional heavy duty stainless steel end cap
- . Dual output available both telemetry and cabled
- . IP67 ingress protection as standard
- . Unique screw off battery compartment
- . Selectable units of measurement
- . Peak hold as standard
- . 2 year manufacturer warranty
- . Manufactured to order
- . Worldwide agent network with stock held



Shackle Dimension`s Van Beest P-6033 Heavy Duty Sling Shackle BN

Shackle Size WLL	a	b	c	d	e	f	g	h	i	l	k	m	Weight KG	
125	85	80	154	85	137	366	220	583	426	390	64	150	92	
150	94	95	179	89	147	391	253	645	435	434	50	170	140	
200	110	105	199	100	158	481	280	759	470	482	50	205	205	
250	126	120	227	110	179	545	300	859	519	530	60	240	264	
300	135	134	245	122	195	601	350	947	575	620	70	265	360	
400	160	160	293	145	231	576	370	985	675	690	80	320	580	
500	170	180	328	160	263	681	450	1131	748	790	90	339	780	
600	190	200	348	170	289	741	490	1234	809	865	100	370	980	
700	200	215	392	190	315	751	540	1284	879	901	100	400	1360	
800	218	230	420	200	342	851	554	1426	942	947	110	420	1680	
900	242	255	466	220	368	851	580	1488	1023	1023	120	440	1650	
1000	260	270	490	240	399	851	614	1532	1103	1107	120	460	2970	
1250	285	300	510	260	452	931	650	1666	1227	1183	150	530	3700	
1550	285	320	550	280	483	950	680	1710	1300	1253	150	560	4000	
Material	Bow and Pin alloy steel, grade 8, quenched and tempered, optional stainless steel 17-4 load pin													
Safety Factor	MBL equals 5 x WLL													

Specification`s

	Size WLL	125	150	200	250	300	400	500	600	700	800	900	1000	1250	1550	
Units	1	Tonnes														
	2	Klbs														
Resolution	1	0.01						0.1								
	2	0.02						0.2								
Battery Type	Load Shackle 2 off AA batterys (depending on update rate up to 6 months continuous use) Handset 2 off AA (40 Hours)															
Accuracy	±/- 1% of F.S.															
Operating temp	-10 deg C to +60 deg C															
Environmental rating	IP67															
Radio Frequency	2.4 GHz ELT24 transmitter, optional receivers. Transmission range 500 mtr depending on site conditions.															
Handset	As standard ELT-24-HS2 2.4 GHz receiver.															
Note: Any 2 units of measurement can be specified at time of order.																
Certification package supplied with each link contains: Calibration Certificate to BS 8422:2003, Declaration of Incorporation, EU Declaration of Conformity, Declaration of Manufacture, EC Declaration of Incorporation, CE- Approval Statements, Checklist and user instructions. Material Certificates 2.1, 2.2, 3.1.																



ELS-24 Heavy Duty P-6033 Telemetry Sling Shackle

Local Agent:

Euroload Limited, Unit 9, Airside Business Park, Dyce Drive, Kirkhill Ind Est, Dyce, Aberdeen, AB21 0GT.
Tel: +44 (0) 1224 774115 e-mail info@euroload.eu